



P 5000

New generation of marking solution



www.pro-pen.com

The new marking solution

SIMPLE & FLEXIBLE

The P5000 is really easy **to use and to install**; it does not require any external training. This machine is **robust** and **easy to maintain**.

The P5000 is **flexible** to the size of the part to mark (height up to 300 mm) and it can mark all types of materials up to a hardness of 62 HRC.

The P5000 is suitable to every country thanks to a **single electrical supply** from 100 V to 230 V.

ECONOMIC & PRODUCTIVE

The P5000 uses the **micro-percussion** technology which, contrary to traditional technology, does not require additional consumables. The P5000 optimises the "cost/productivity/marketing quality" ratio.

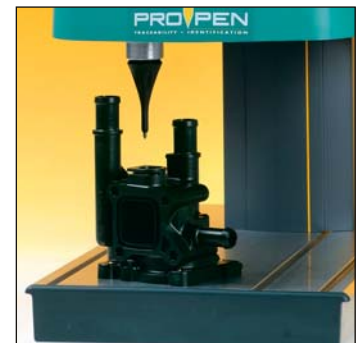
This machine allows a **rapid marking** 5 characters per second, with a **high quality**.



SELF-CONTAINED & AUTONOMOUS

The P5000 is self-contained with an integrated control unit, and works without computer.

Thanks to its USB plugs, the P5000 proposes an **extended memory** and a **link with peripheral**.



Technical characteristics

Main characteristics

Energy: pneumatic or electromagnetic
Marking zone: 100x120 mm
Characters size: from 0.5 to 100 mm in step of 0.1 mm
Height of the part to be marked: up to 300 mm
Dimensions: L= 580 mm, W= 280 mm, H= 734 mm
Weight: 34 kg
Standard marking tool: PN22 or EM11/c

Environment

Electrical supply: 100 to 230 V
Power: 300 W, Frequency: 50 to 60 Hz
Operating temperature: 5 to 45°C
Compressed air supply (pneumatic version):
Air pressure 5.5 bar nominal/81 PSI
Ø 1/4" pneumatic female gas connector
Equipped with air treatment



Solutions to manage data



No PC required

Multi-languages

User-friendly

INTERNAL SOFTWARE



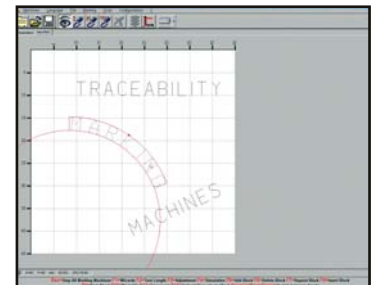
- Create file and save it
- User-friendly: available in many languages
- Graphic preview

LINK WITH EXTERNAL FILES



- USB key (to save and transfer files and to update the internal software)
- RS232 and Ethernet

EXTERNAL SOFTWARE

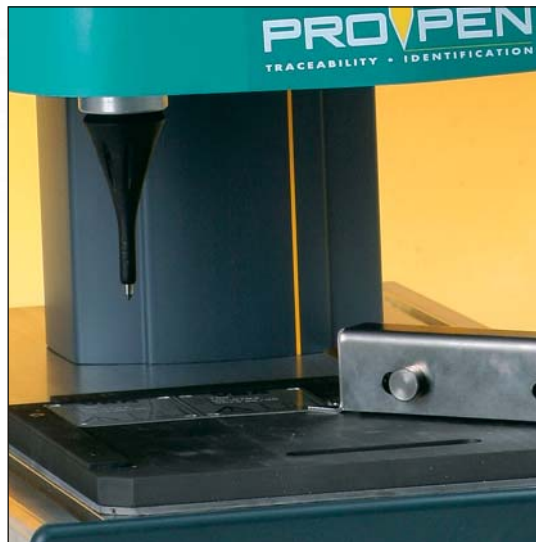


Enhanced preview

- Connection to a large database
- Wizard to create special text



Options and accessories



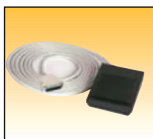
Adaptable

Expandable

Flexible

SAFETY & PROTECTION

Standards footswitch
25053



Industrial footswitch
25054



Control panel
25055



De-oiler air filter
2540



Protective cover
2743



EXPENDABLE & MODULAR

Plate holder
2509



Magnetic clamping
2508



DP3500



DP4500



TAG3500

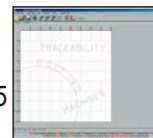


INNOVATION & TECHNOLOGY

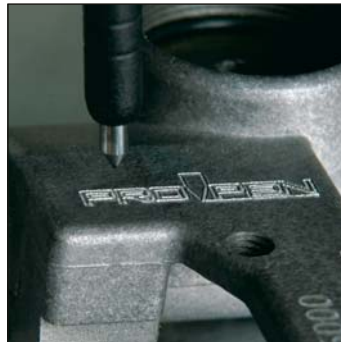
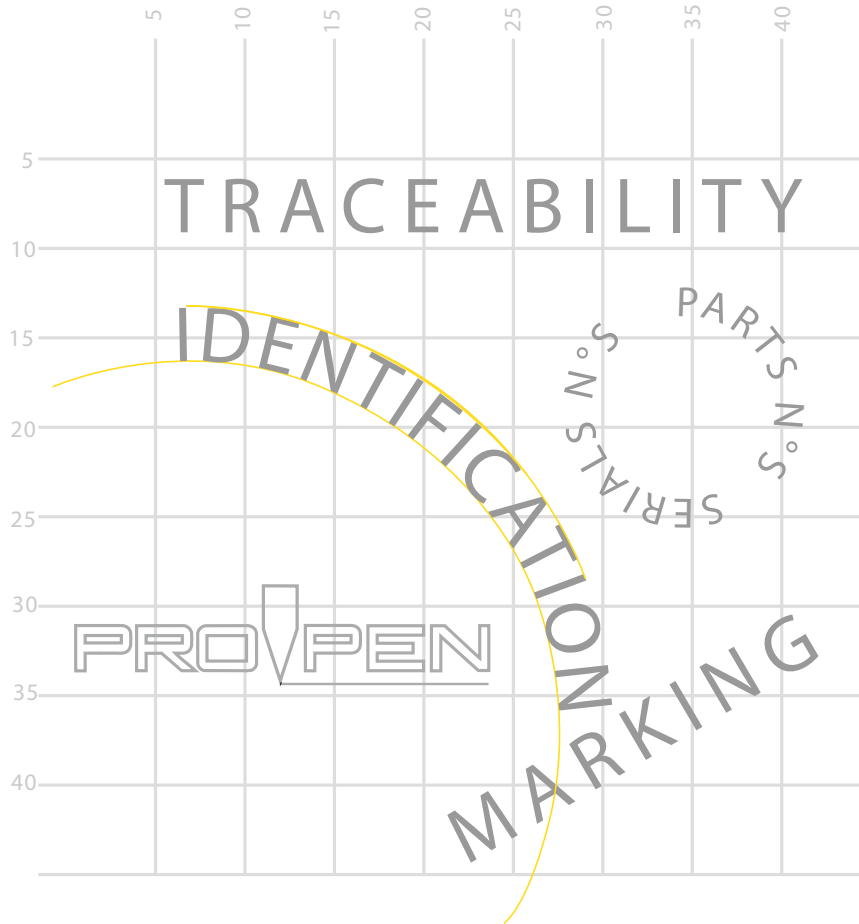
Light for marking area
25154



External software PW05



Applications



Main applications

- General mechanics
- Precision mechanics
- Automotive
- Metal work
- Aeronautics
- Cycles
- Keys and locks
- Identification plate



Services

Design of logos

PRO-PEN offers to create and download into your machine, P5000, a customised logo. This will allow you to mark the parts you manufacture with your company logo, therefore improving the quality of your product identification and to facilitate customers logos.

Customised logo PN	Ref 2514
Customised logo EM	Ref 25141



Spare parts

To respond quickly to your needs, PRO-PEN keeps in stock all the necessary spare parts that are available for immediate despatch.



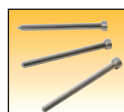
Stylus PN12



M1C



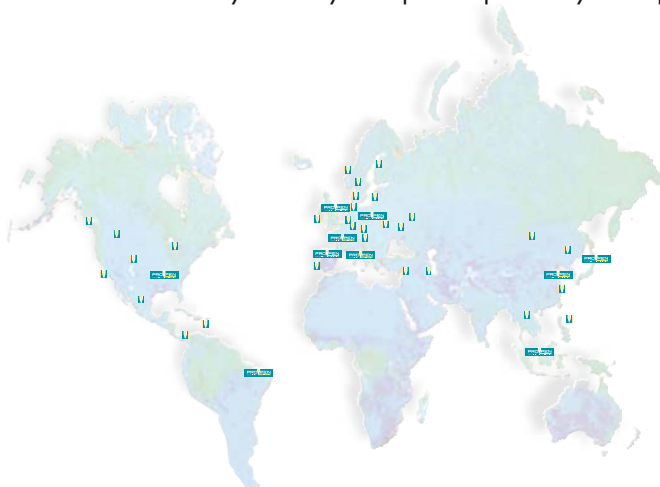
Points PN



Points EM

Worldwide sales network

PRO-PEN guarantees a worldwide technical support close to your application, with the assistance of 22 subsidiaries and more than 120 qualified distributors ready to offer you a quick response to your request.



Servicing kits

Routine servicing of your equipment will increase its life span and ensure greater reliability. PRO-PEN offers various servicing kits depending on your requirements and the way you use it.

Our repairs and revision kits are all done by our inside skilled technicians, which guarantees a high level of quality. A complete diagnostic report is sent with each machine that is repaired.

Servicing kits	Platinum	Gold	Silver
Reference	2763	2761	2760

Standards complied to

Directive
«Machine» 98/37/CE

Directive
«Electromagnetic compatibility»
89/336 EEC

Directive «Low Voltage»
73/23 EEC

Manufactured **ISO 9001** compliant



For more information contact us



www.pro-pen.com

9800-J Southern Pine Boulevard - Charlotte, NC 28273
Tel.: (1) 704 525 5230 - Fax: (1) 704 525 5240
E-mail: tfinc@usa.technifor.com
Detroit office Tel.: (1) 734 459 1500

Distributor