

# KITAGAWA COMPLETE

FULL LINE OF MACHINE TOOL ACCESSORIES



Chuck

Rotary Cylinder

NC Rotary Table

Power Vise

Work Gripper



**KITAGAWA**  
**NORTHTECH**

KITAGAWA  
MC POWER VISE VE160LN  
Long

**CHUCK**

## Chuck series

# Standard Chuck

## Cylinder series exclusive For KITAGAWA chucks

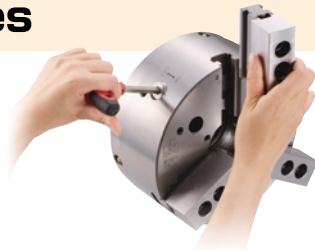
From our standard chucks and cylinders through to our most advanced, this extensive line up combines excellence with performance, and caters for all KITAGAWA chucking.

### Large Thru-Hole High Speed Power Chuck

## QJR series

**NEW**

- Quick and easy Jaw Change over
- Suitable for small and large batch production
- Quick & smooth Jaw replacement

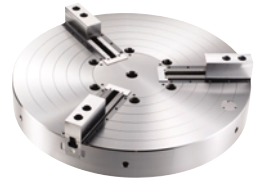


### Closed Centre Power Chuck

## NV series

**NEW**

- Low maintenance Power Chuck for Vertical Lathes
- Sealed Base Jaw to prevent Swarf and Coolant ingress



### Large Thru-Hole High Speed Power Chuck

## B-200 series

- World Renowned Standard chuck



### Lever Style Power Chuck

## BL-200 series

- Extra Long Jaw Stroke
- Flange work securely gripped



### Large Thru-Hole Power Chuck

## BB200 series

- Stable machining even for large diameter bar material
- Universally recognised standard chuck



### Counter Balanced Power Chuck

## HOH series

- Counter Balance Design
- Secure gripping at high speeds



### Large Thru-Hole High Speed Power Chuck

## BS300 series

- Reduced Jaw Lift
- The next generation chucking standard



### Quick Jaw-Change Chuck

## QB300 series

- Easy set-up and Quick Change of Top Jaw





## 2 Jaw Large Thru-Hole High Speed Power Chuck

# BT200 series

- For gripping Irregular shaped components



## 4-Jaw Lever Type Power Operated Chuck with Closed Centre

# HW series

- Steadily grips block, oval, or any irregular shaped works  
Self Centring Mechanism (2+2 Jaws)



## 2-Jaw Lever Style Power Chuck

# BLT200 series

- Extra Long Jaw Stroke for gripping Irregular shaped components  
Flange work securely gripped



## Mega-Long Stroke Chuck

# ML series

- Exceptionally long Jaw stroke  
Suitable for Multi-Diameter gripping and flange work



## Closed Centre Power Chuck

# N series

- Closed Centre Standard Chuck  
The standard Closed Centre chuck



## 2-Jaw Mega-Long Stroke Chuck

# MLT series

- Exceptionally long Jaw stroke  
Best suited for gripping irregular shaped components



## Closed Centre Power Chuck (Long Stroke)

# NL series

- Extra Long Jaw Stroke  
Flange work securely gripped



## 1-Jaw Mega-Long Stroke Chuck

# MLV series

- Exceptionally long Jaw stroke  
Best suited for jig work fixturing



## Closed Centre, 2-Jaw Power Chuck (NLT-Long Stroke)

# NT·NLT series

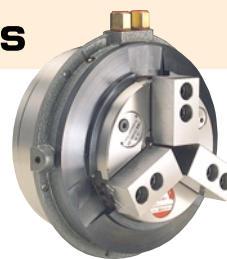
- Best suited for gripping Irregular shaped components



## 3-Jaw Air-Operated Self Contained Chuck

# UVE..K series

- Built-in Pneumatic Cylinder





**CHUCK**

## Chuck series

### 3-Jaw Air-Operated Self Contained Chuck

## UB series

- Built-in Pneumatic Cylinder  
Large chuck best suited  
for pipe processing



### 3-Jaw Ultra High Precision Air Chuck

## KPC series

- High Repeatability  
Optimum KPC chuck for finishing  
and precision processes



# Advanced Chuck

## Exclusively designed work specific chucks for mass production

Designed with gripping to accommodate a variety of applications.

### Dual Lock Chuck

## DL200 series

- A revolutionary chuck  
with the worlds first 2-way gripping  
Unbelievable versatility  
with the ability to grip anything  
you want



### Power Wing Chuck

## PW(C) series

- Pull back of workpiece  
for secure gripping of casting or forging  
PWC compensating type  
for rough casting through centre

※ PWC has the same specification  
as PW with the exception of the fact that PWC  
is a compensation type.





## 2-Jaw Power Wing Chuck

# PWT(C) series

- Draw down irregular shaped materials for steady gripping  
PWT(C) for gripping of square or flange castings or forgings

※PWC has the same specification as PW with the exception of the fact that PWC is a compensation type.



## Finger Chuck

# FG series

- Face clamping chuck, ideal for thin walled workpieces



## Open Centre Pull Lock Chuck

# PUB series

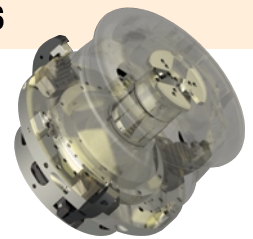
- Draw down for high-precision processing  
Open Centre type accommodates shaft processing



## Finger Chuck for Automotive Wheels

# FG-V series

- Rigid body  
Finger Chuck for aluminium wheel machining for automobiles



## Pull Lock Chuck

# PU series

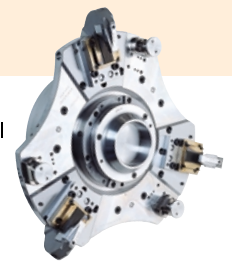
- Pull back chuck for external gripping



## Finger Chuck for Automotive Wheels

# FG-L series

- Standard Finger Chuck  
Light-Weight body for aluminium wheel machining for automobiles



## Pull Lock Chuck

# PUE series

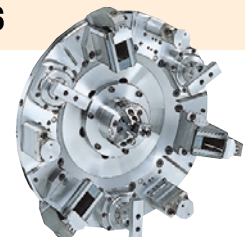
- Pull back chuck for internal gripping



## 6-Jaw Finger Chuck for Motorcycle Wheels

# FG-M series

- Finger Chuck ideally suited for aluminium wheel machining for motorcycles



## Level Lock Chuck

# LU series

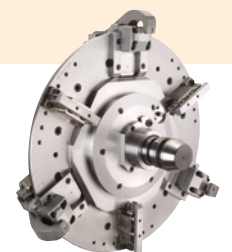
- Economical pull back chuck



## Easy Preparation Finger Chuck

# FG-Q series

- Quick setup for size changes  
Finger Chuck ideally suited for aluminium wheel machining for automobiles





# Cylinder

## Cylinder Series exclusive for KITAGAWA Chucks

From standard to advanced type, a recognised line-up of high performance cylinders accommodates every KITAGAWA chuck.

When selecting the combination of chuck cylinders, please contact us.

### Compact Style Hydraulic Cylinder with Open Centre

## SS series

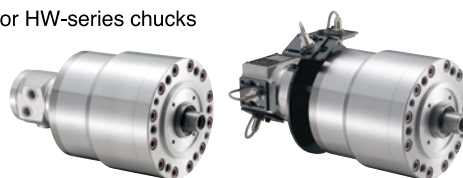
- Accommodates BB200 and B-200 series
- The compact design maximises Lathe performance



### Double piston cylinder

## YW..R series

- Best suited for HW-series chucks



### Large Thru-Hole High Speed Hydraulic Cylinder with Open Centre

## S series

- KITAGAWA standard thru-hole type



### Compact Style Hydraulic Cylinder with Closed Centre

## M series

- Short, Compact, and Light
- The compact design maximises Lathe performance



### Large Thru-Hole High Speed Hydraulic Cylinder with Open Centre

## S-L series

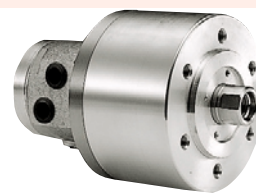
- KITAGAWA standard thru-hole type



### Hydraulic Cylinder with Closed Centre

## Y-R series

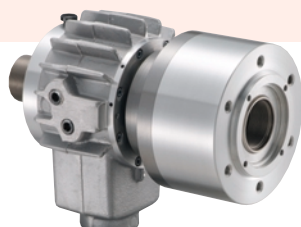
- Closed Centre
- KITAGAWA standard type



### High Speed Hydraulic Cylinder with Open Centre

## F series

- KITAGAWA standard thru-hole type



### Hydraulic Cylinder with Closed Centre

## Y-RE series

- Closed Centre
- Kitagawa standard series
- Built in proximity switch



High Speed Air Cylinder with Closed Centre

# AY-R series

- Ideally for extremely thin walled workpieces



Stationary Cylinder

# YS series

- Suitable for use on Machining Centre  
Suitable for a variety of chuck types







# Scroll Chuck

Safe, stable and easy scroll chucks

Versatile scroll chuck series for gripping various works freely

Scroll Chuck with Integrated Jaw (Straight Recess)

## SC·JN series

- Durable, reliable and versatile  
KITAGAWA'S standard type



4-Jaw Scroll Chuck

## JS series

- Reliable and effective gripping  
of irregularly shaped components



Scroll Chuck with 2 piece Jaw (Straight Recess)

## JN..T series

- Two piece jaw



Independent Chuck (Straight Recess)

## IC series

- Independent 4 Jaw Chuck



Scroll Chuck with Two Piece Jaw

## JN..RA series

- Two piece jaw



Independent Chuck (Short Taper)

## IA series

- Independent 4 Jaw Chuck



2-Jaw Scroll Chuck

## JT series

- This two jaw chuck provides  
the optimum solution  
for gripping valves, pipe joints  
and other irregularly shaped  
components





## Work Gripper

**Widely spreading and firmly gripping  
Handy work gripper series alternating jigs**

### Work Gripper

## AS series

- Pneumatically operated stationary chuck  
Can be used as an alternative to a fixture



### Stationary Scroll Chuck

## SC-S series

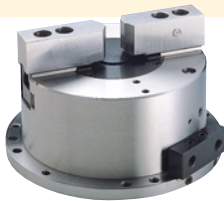
- Durable, reliable and versatile  
Stationary scroll chuck



### 2-Jaw Work Gripper

## AT series

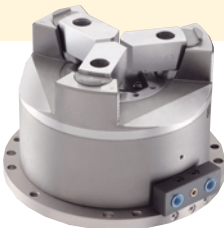
- Secure gripping of all types of component  
Can be used as an alternative to a fixture



### Pull Lock Work Gripper

## PLS series

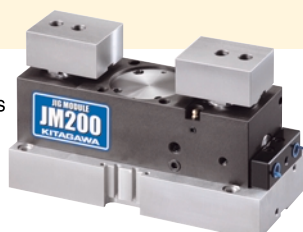
- Pull Lock for steady gripping  
Stable cutting is guaranteed through the high precision and exceptional gripping performance.  
Can be used as alternative to a fixture

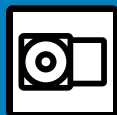


### Jig Module

## JM200

- Securely grips a wide range of irregularly shaped components  
New clamping system accommodates a variety of workpieces





## NC Rotary Table

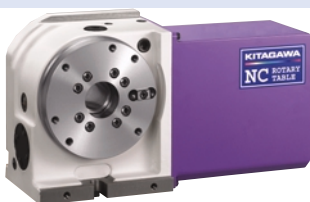
**High clamping torque, high accuracy and high rigidity  
KITAGAWA NC Rotary tables feature proven technology**

KITAGAWA NC Rotary Table series are designed to flexibly respond to a variety of machining needs. The strong spindle-clamping system, the very high positioning accuracy, and the large thru-hole enable to machine the big shaft works.

### NC Rotary Table

## MR series

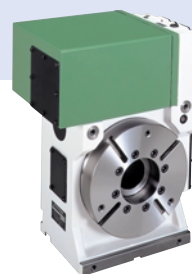
- Industry standard compact rotary table (Purple)



### High Performance NC Rotary Table - Top-motor -

## TU series

- High performance range suitable for 5th axis machining on horizontal machining centres



### High Performance NC Rotary Table

## TMX series

- Side motor mounted,  
Vertical or Horizontal Usage -

- High performance range with high rigidity for heavy cutting (Green)

※ In accordance with the foreign trade control ordinance, permission of the ministry of economy, trade and industry is required when exporting twin axis products overseas.



### Multiple Spindle NC Rotary Table

## TM series

- Multi spindle range for multiple work piece machining  
Reduces set up time and increases productivity

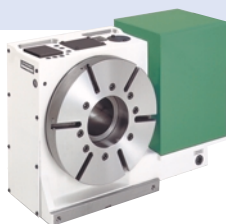


### High Performance NC Rotary Table

## TR series

- Side motor mounted,  
Vertical or Horizontal Usage -

- High performance range for machining large work pieces  
Electric Discharge M/C  
Reliable Performance for use in water



### Compact Type Tilting NC Rotary Table

## TT101·TT120

- Compact tilting range to suit 5 axis machining on small work pieces

※ In accordance with the foreign trade control ordinance, permission of the ministry of economy, trade and industry is required when exporting twin axis products overseas.



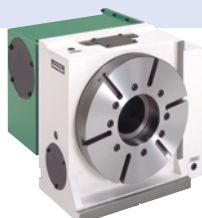
TT101

### High Performance NC Rotary Table

## TBX series

- Back side mounted motor -

- High performance range with back mounted motor to reduce interference with machining area



### Low centre line tilting NC Rotary Table

## TT140

- Tilting type to suit 5 axis machining with decreased input on the Z axis

※ In accordance with the foreign trade control ordinance, permission of the ministry of economy, trade and industry is required when exporting twin axis products overseas.





### Tilting NC Rotary Table

# TT182

- High stability tilting table to suit 5 axis machining (Blue)

※In accordance with the foreign trade control ordinance, permission of the ministry of economy, trade and industry is required when exporting twin axis products overseas.

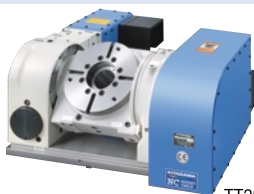


### Tilting NC Rotary Table

# TT251·TT321

- High rigidity tilting tables to suit 5 axis machining on large work pieces with heavy cutting

※In accordance with the foreign trade control ordinance, permission of the ministry of economy, trade and industry is required when exporting twin axis products overseas.



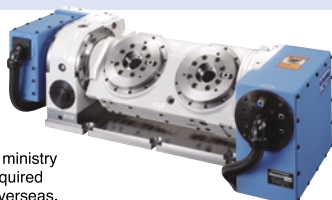
TT251

### Two-axis Tilting NC Rotary Table

# TW2180

- High performance twin spindle tilting table

※In accordance with the foreign trade control ordinance, permission of the ministry of economy, trade and industry is required when exporting twin axis products overseas.



### Exclusive NC Rotary Table for Wire Cutting Electric Discharge Machinery

# DM100

- Exclusive table for Wire Cutting Electric Discharge M/C  
Reliable Performance for use in water



**WISE****Vise series****KITAGAWA**  
Machine Tool Accessories

# Power Vise

## Securely, stably and easily gripping vise series

Kitagawa power vise series features powerful gripping and closely contacting of only 0.015mm for the work by an original toggle joint mechanism.

### Vises for Small-Size Machines

## VC-N series

- Blue body vise just fit to small-size machines!



### MC Power Vise Multi-type

## VM-N series

- The new system enables vertical and horizontal mounting, and clamping of the inside of work! Versatile Vises with the Green Body



### Lowest profile Type Steel Vises

## VE-N series

- Wide Space machining created Low-Height Steel Vises with the Yellow Body



### Multi-Power Vise Vertical 4-Piece Integrated Type

## MV125N

- The most suitable for horizontal machines! Vertical integrated-type vise without an angle plate



### Lowest profile Type Long Power Vises

## VE-LN series

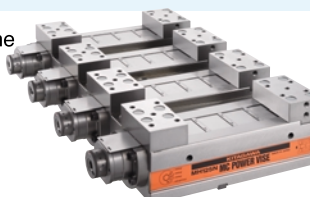
- Large jaw opening is offered by the reliable VE-N series! Low height steel vises with the Yellow body



### Multi-Power Vise Horizontal 4-Piece Integrated Type

## MH125N-4

- Most suitable for high-volume production machining! Parallel integrated-type vise



### MC Power Vise

## VQX-N series

- Everlasting standard! MC vises with the Orange body



### MC Air Vise

## VQA125N

- Automated air-operated vise for saving set-up time and costs!



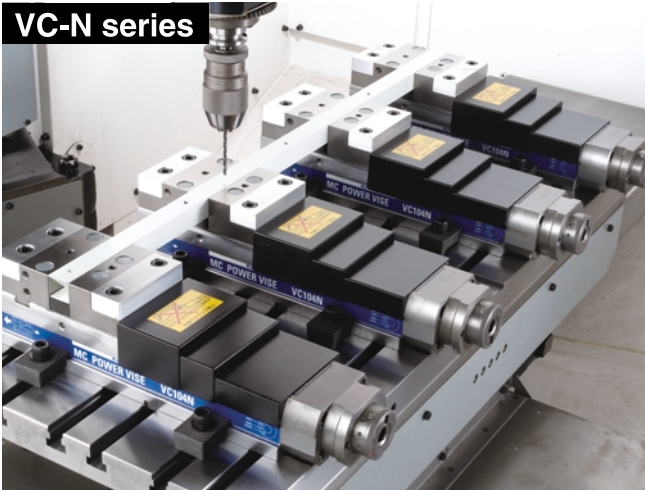




# Sample Application

**KITAGAWA**  
Machine Tool Accessories

**VC-N series**



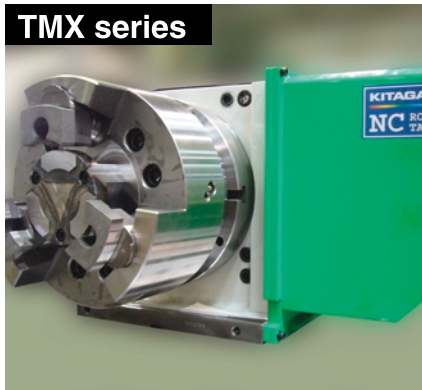
**VQX-N series**



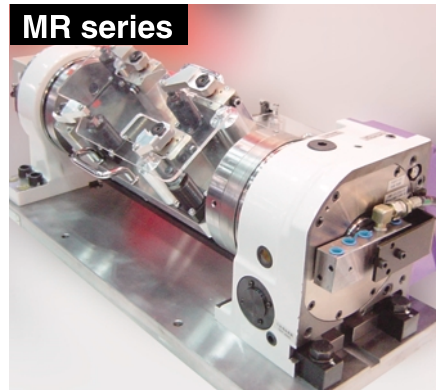
**VE-LN series**



**TMX series**



**MR series**



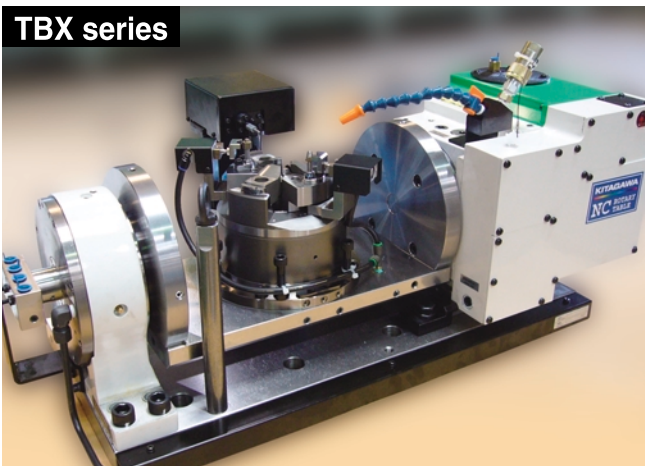
**TT series**



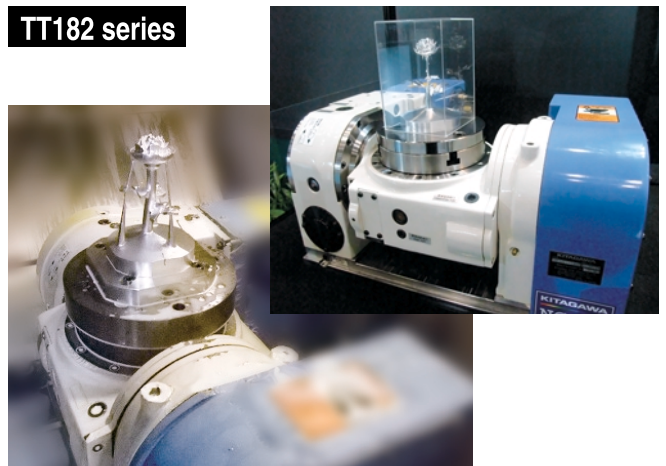
**TM series**



**TBX series**



**TT182 series**

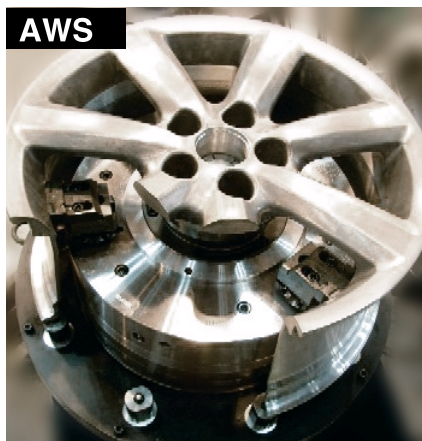




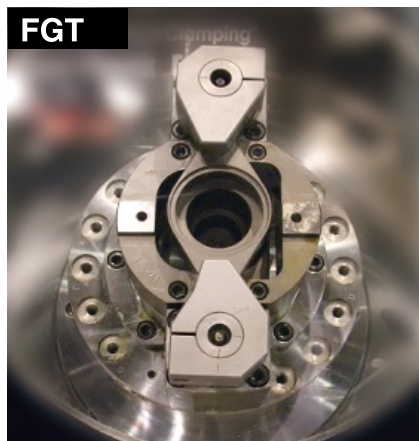
**DL**



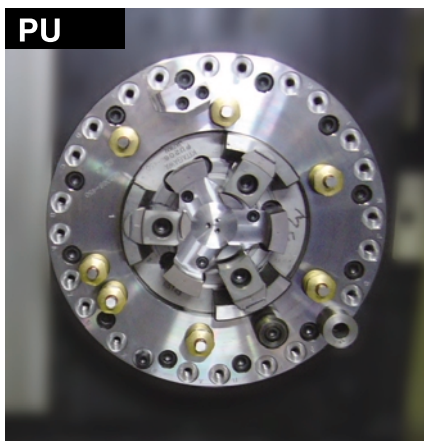
**AWS**



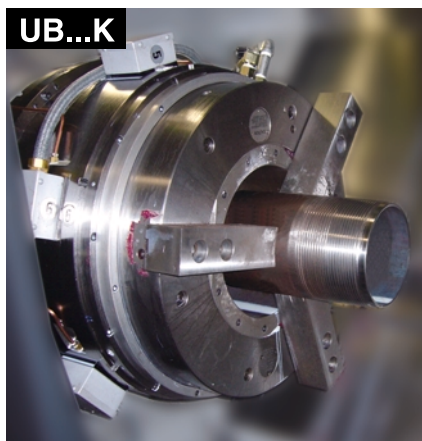
**FGT**



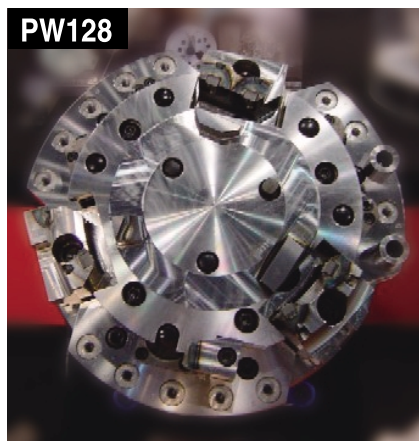
**PU**



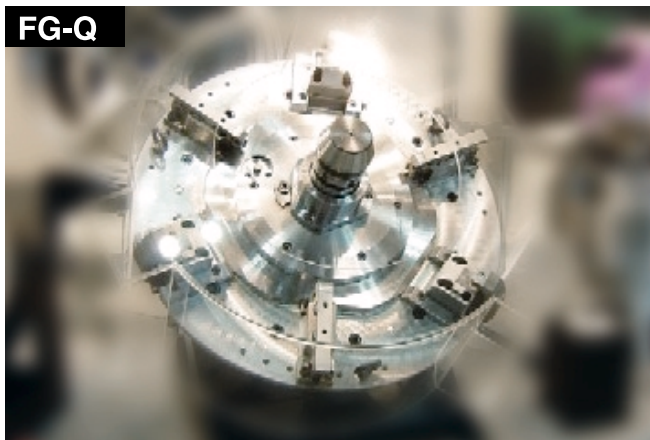
**UB...K**



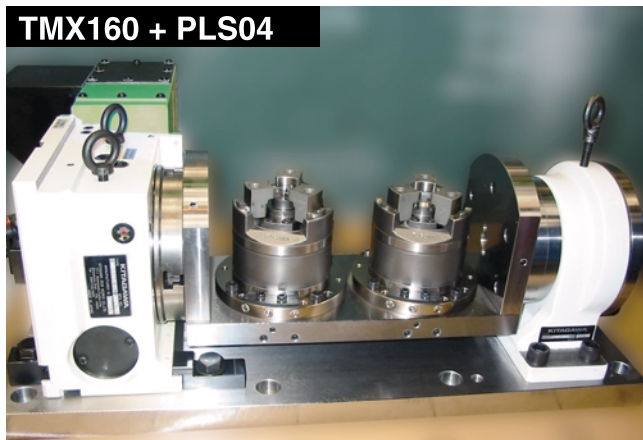
**PW128**



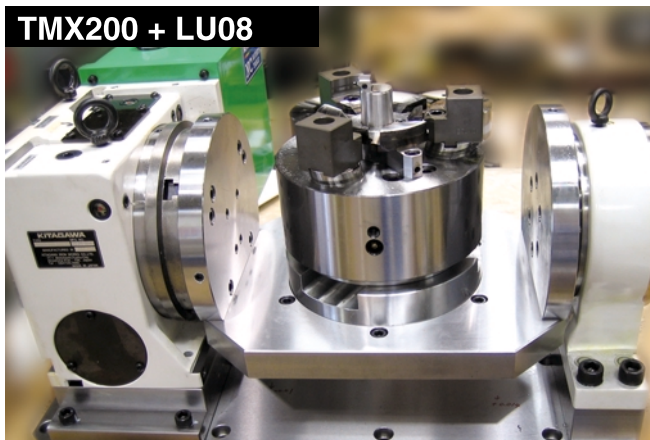
**FG-Q**



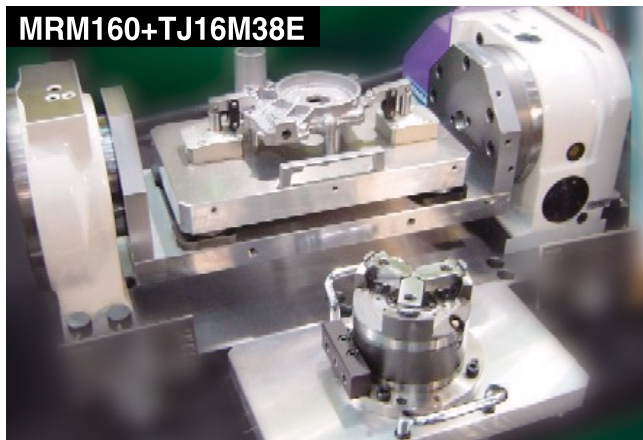
**TMX160 + PLS04**



**TMX200 + LU08**



**MRM160+TJ16M38E**



**MEMO**





## **YOUR COMPLETE WORKHOLDING SOLUTION**

To provide industry with a wide range of top quality products and maintain an uncompromising commitment to customer support and satisfaction. This has been the Kitagawa philosophy for over half a century. Today more than ever, look to Kitagawa-NorthTech to meet the challenges of all your workholding requirements.



301 E. Commerce Drive, Schaumburg, Illinois 60173  
Phone: (847) 310-8787 Fax: (847) 310-9484

**(800) 222-4138**